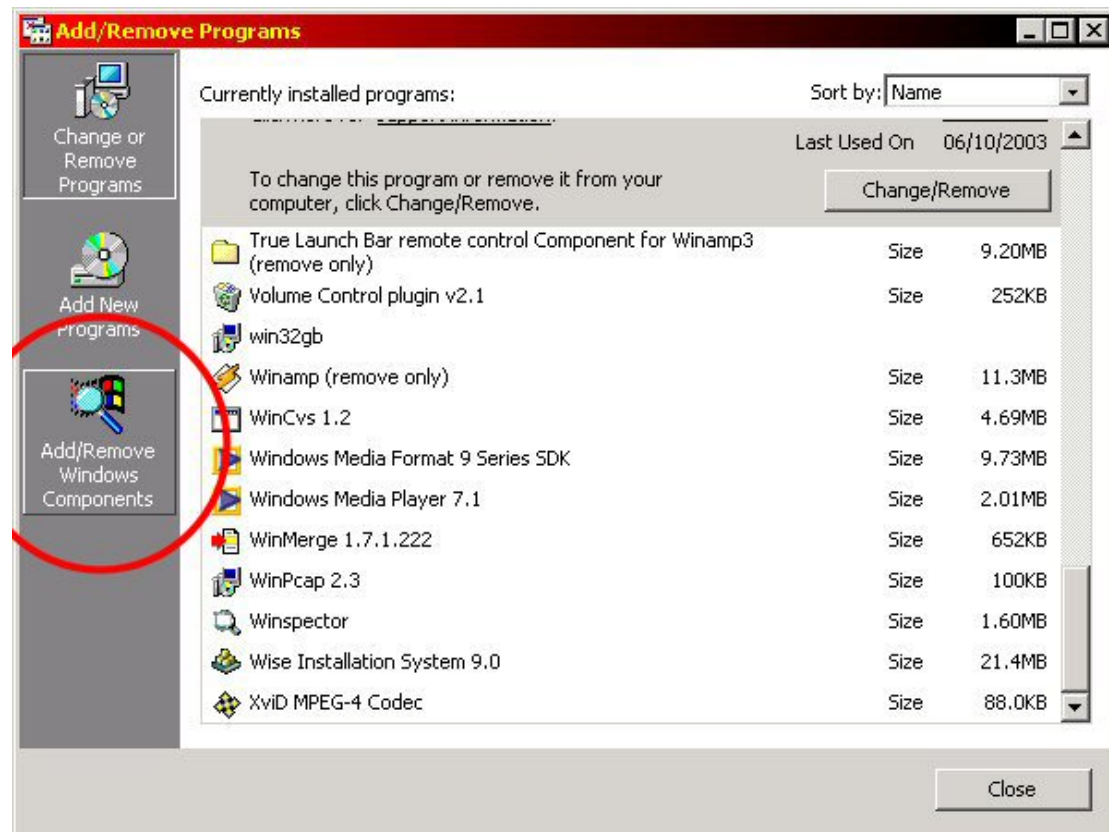


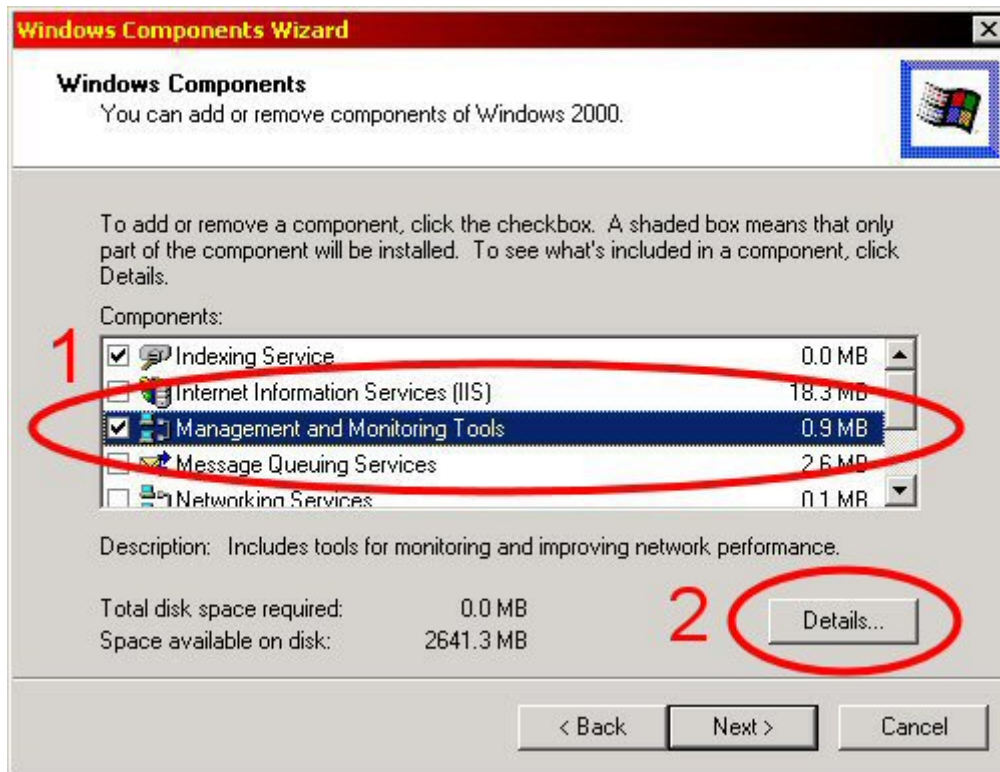
SNMP Installation

To install the SNMP component, follow these instructions:

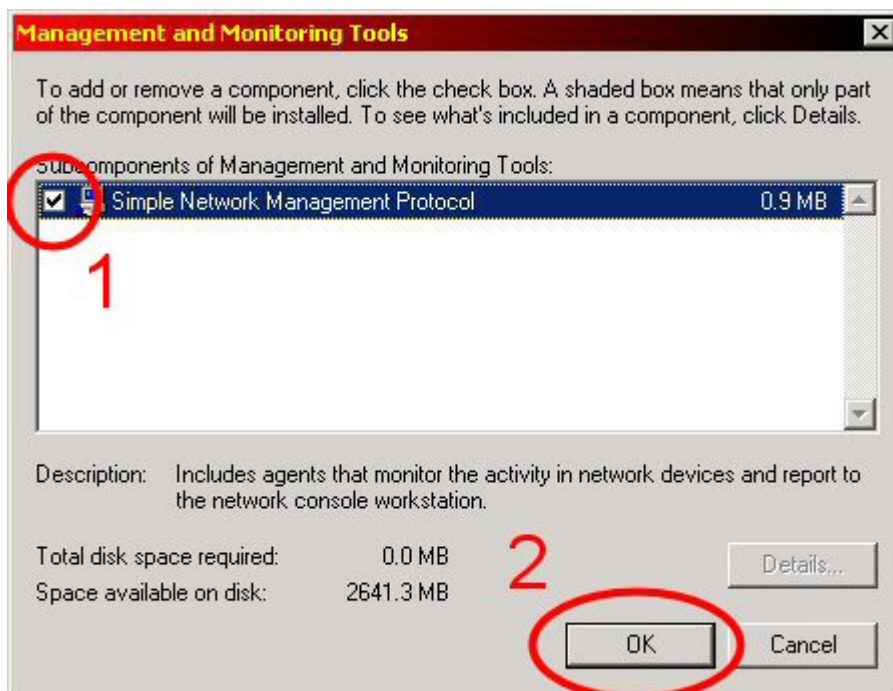
- 1) From the Start Menu, go to Settings->Control Panel. Then open 'Add/Remove Programs'.
- 2) In Add/Remove programs, click on the 'Add/Remove Windows Components' button.



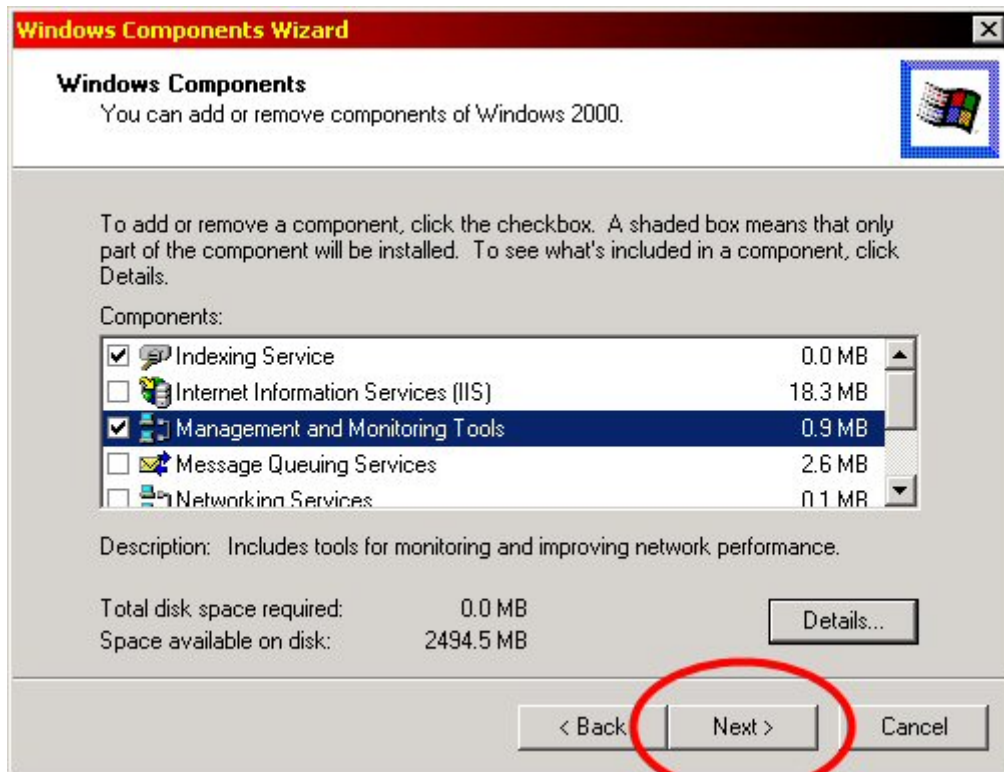
- 3) Once the 'Windows Components Wizard' opens, select 'Managing and Monitoring Tools', and click the 'Details' button.



- 4) In the 'Managing and Monitoring Tools' Window, ensure the 'Simple Network Management Protocol' (SNMP) item is checked and click the 'OK' button.



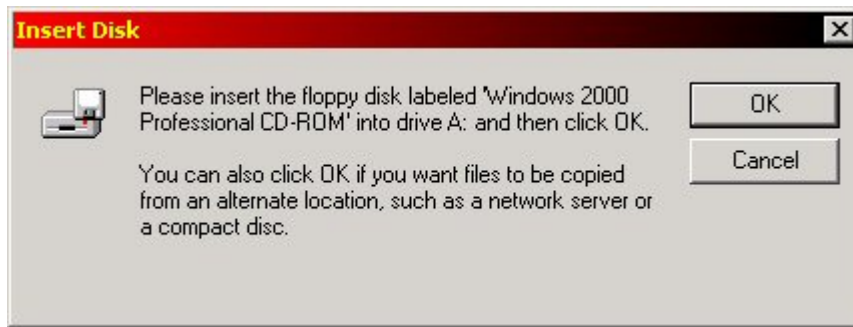
- 5) Back at the 'Add/Remove Windows Components' Window, click on the 'Next' button.



6) Windows will now install and configure the SNMP component.



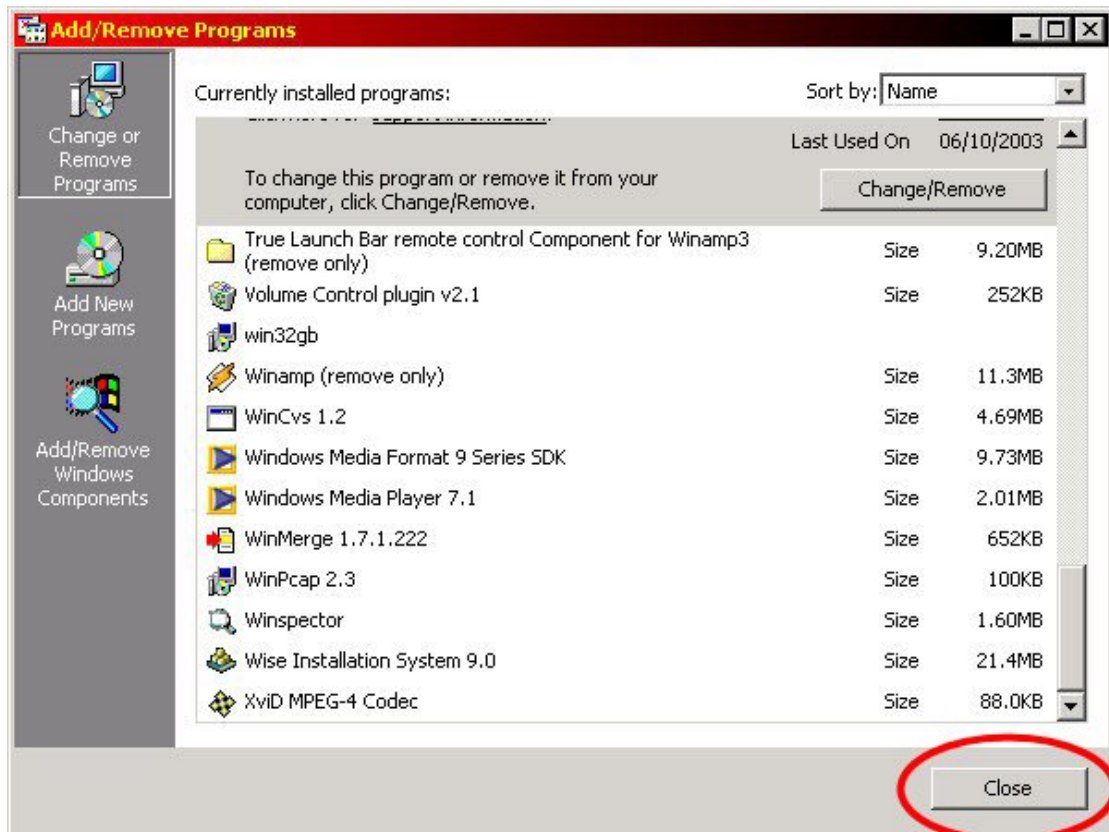
7) The installer may ask for the Windows 2000 installation CD during the installation. Do so, and click the 'OK' button to continue.



- 8) Once Windows has finished installing the SNMP component, you can click the 'Finish' button to exit the installation procedure.



- 9) You can now close the 'Add/Remove Programs' Window by clicking the 'Close' button.



10) Finally, you must **restart your PC** to ensure the SNMP component is activated.