

## Networking on Windows XP Professional

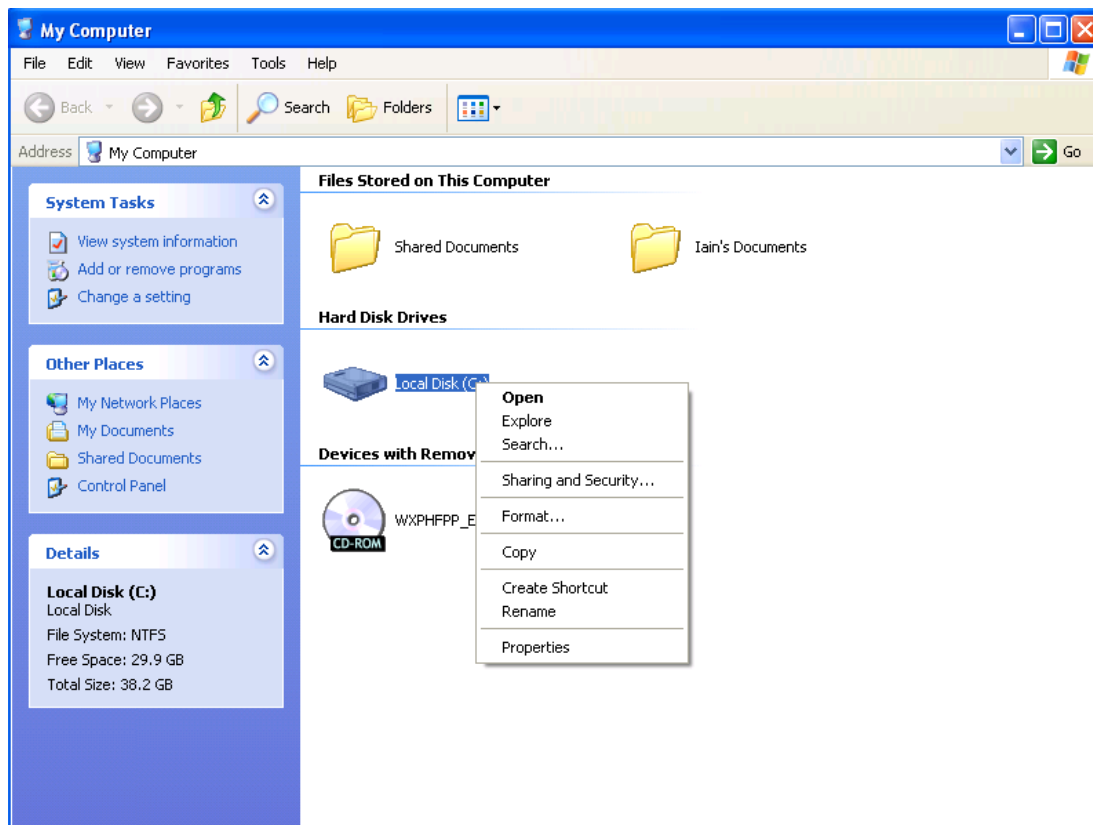
In order for a Windows XP Professional system to be able to access files over a network, you must install the network drivers that come with your motherboard or Ethernet card, and then connect a network cable. Depending on the type of network that you are connecting to, there may be a delay of a few seconds, up to a couple of minutes, before all the parts of the network recognize you, and lets you access network files.

However, the default network/security settings for XP will prevent the system from being accessed from anywhere else on the network. If you look for it on another pc, you will probably find it under the 'workgroup' section. However, when you click upon it, you are asked for a password to access it, and it will not be possible to do this. At this stage, although the XP system is requesting a password, it is not configured to permit external access, so all passwords will be rejected.

In order to open up the network access, you can do the following. However it is important to note that the process described here will make the XP system completely open on the network, with no security at all. Once you have enabled network access, you should apply some security protection to the system.

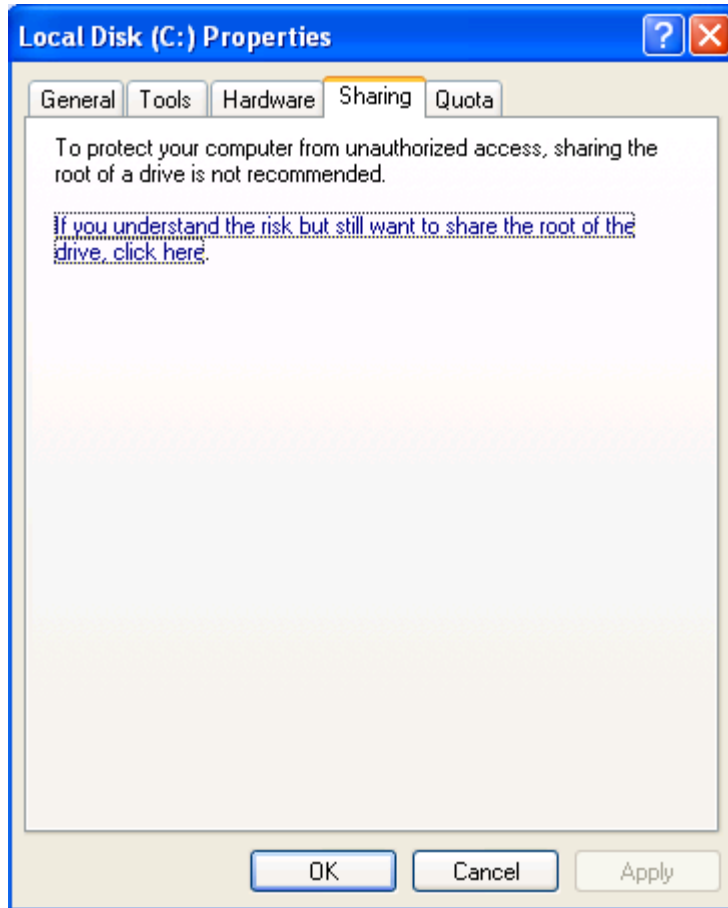
Starting from the Windows XP desktop, click on the Start button, and select 'My Computer'

Place the mouse pointer over the 'C' drive, and right click.



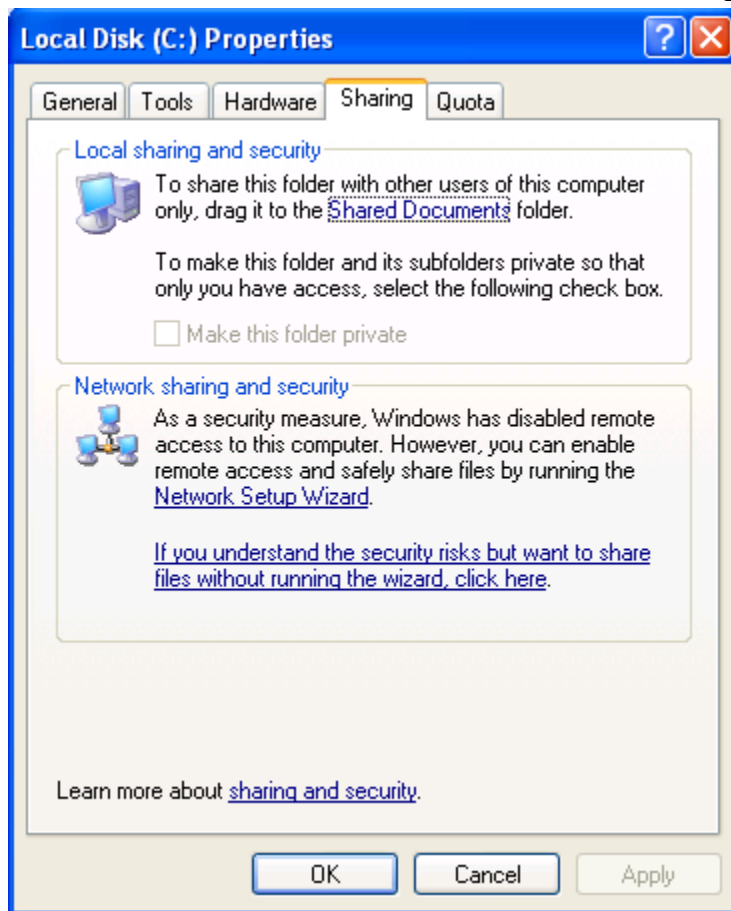
From the menu that appears, select 'Sharing and Security...', and left click.

The following dialogue box appears.

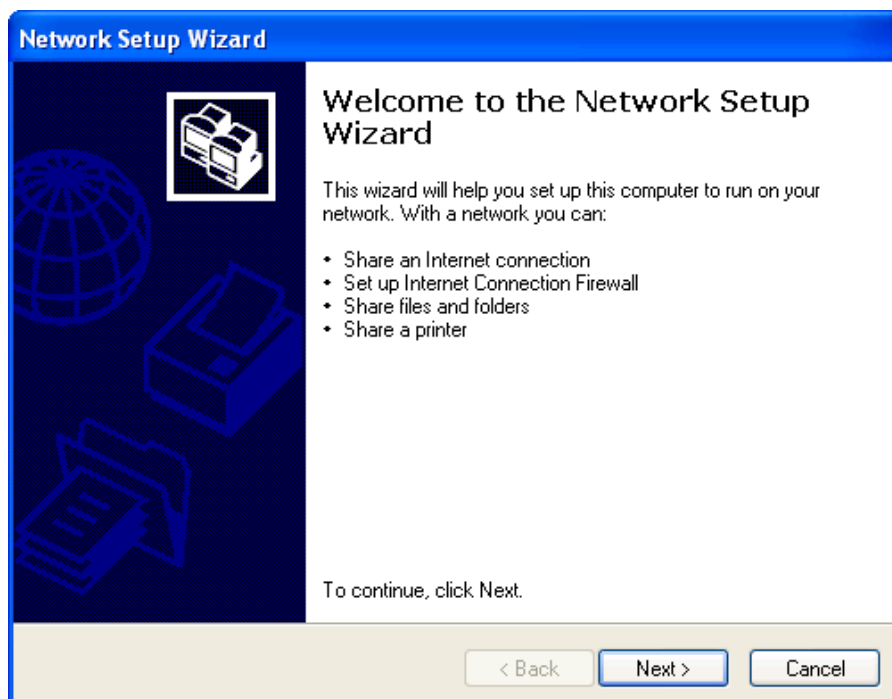


Since we wish to open up the access to the computer, click on the underlined text as instructed in the dialogue box...

...and the following appears.

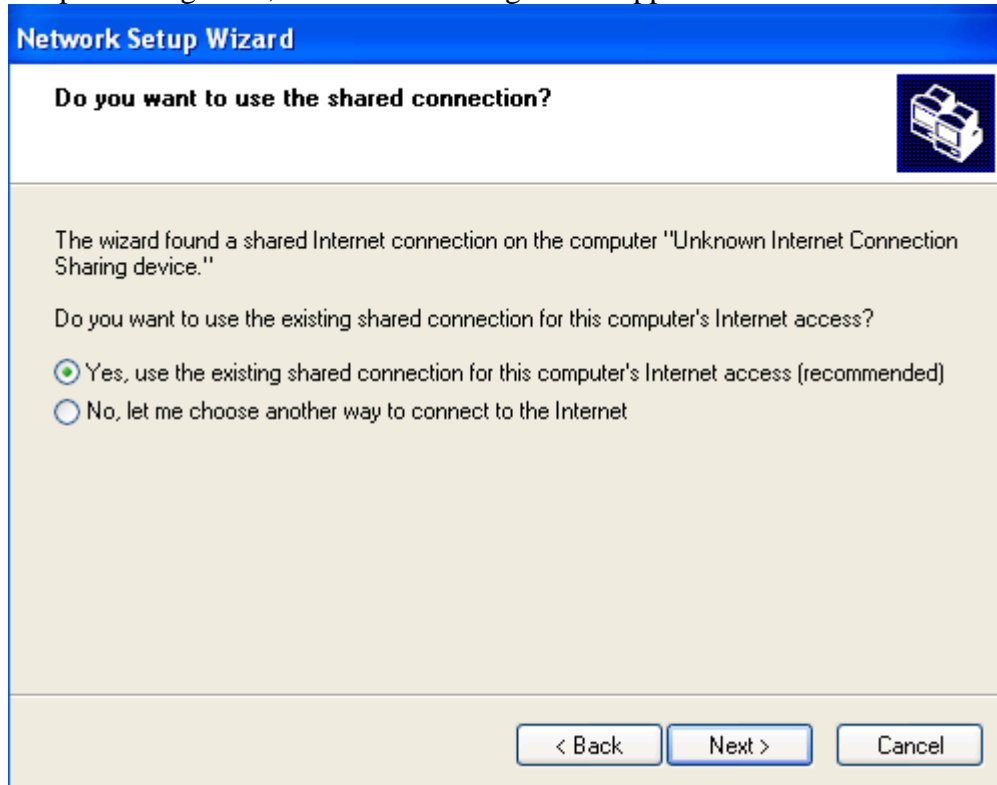


Since we wish to make this system available over the network, it is necessary to run the Network Setup Wizard, so click on the underlined text '[Network Setup Wizard](#)', which then appears, as shown below.

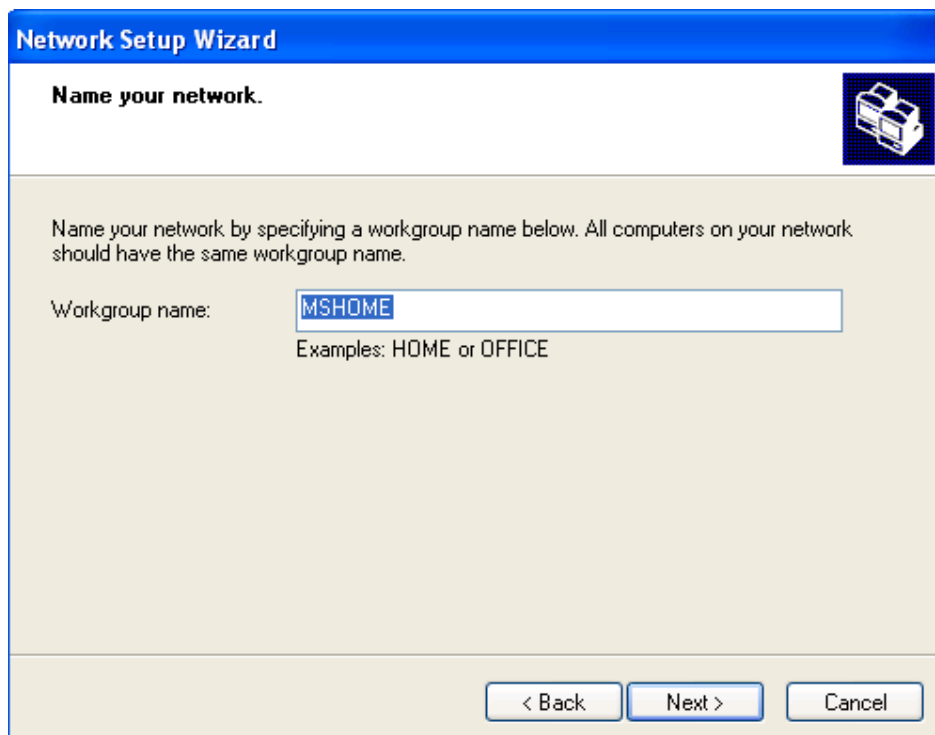


Click on 'Next'.

Keep selecting Next, until the following screen appears.

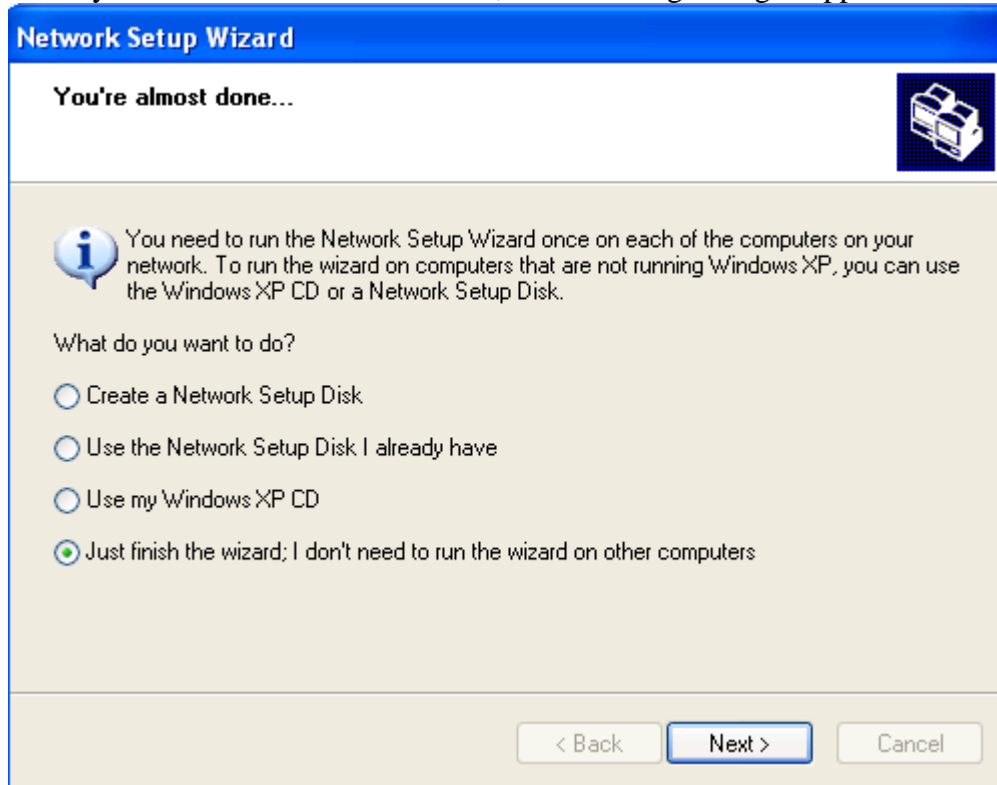


Ensure that you select the 'Yes' option here, before clicking 'Next'

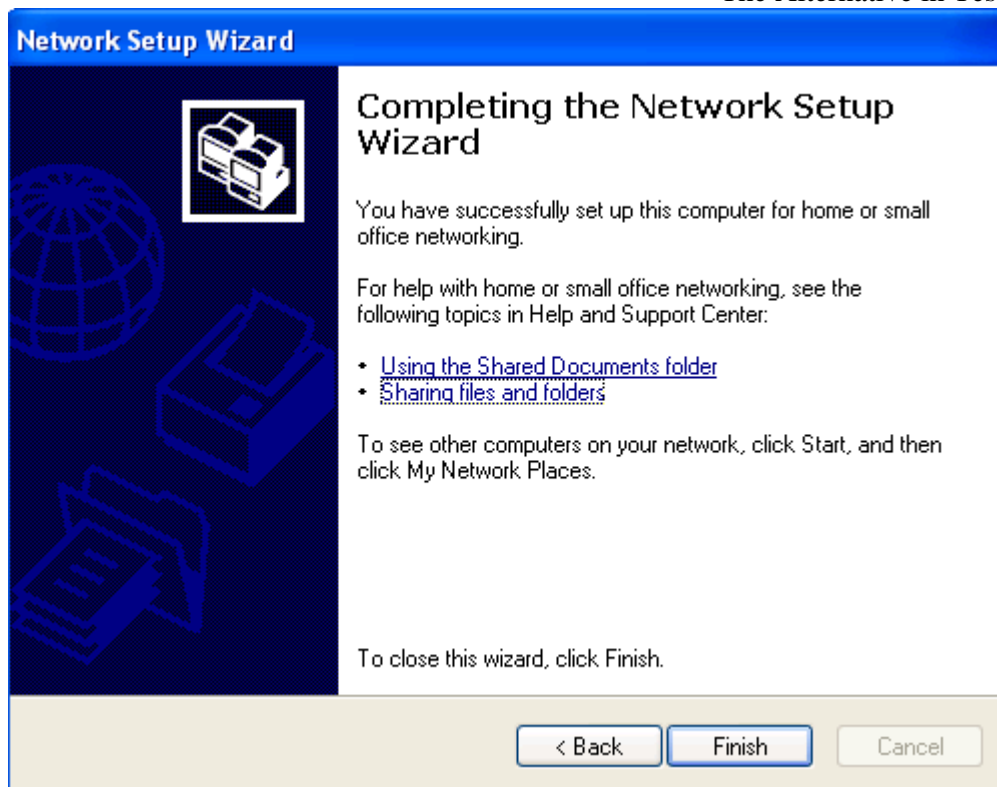


When requested, enter the name you are going to use for the workgroup. The name is not important, although it is the name that other computers on the network will look for, when they wish to access the new system.

When you reach the end of the wizard, the following dialogue appears.



Be sure to select 'Just finish the wizard...', before clicking Next.



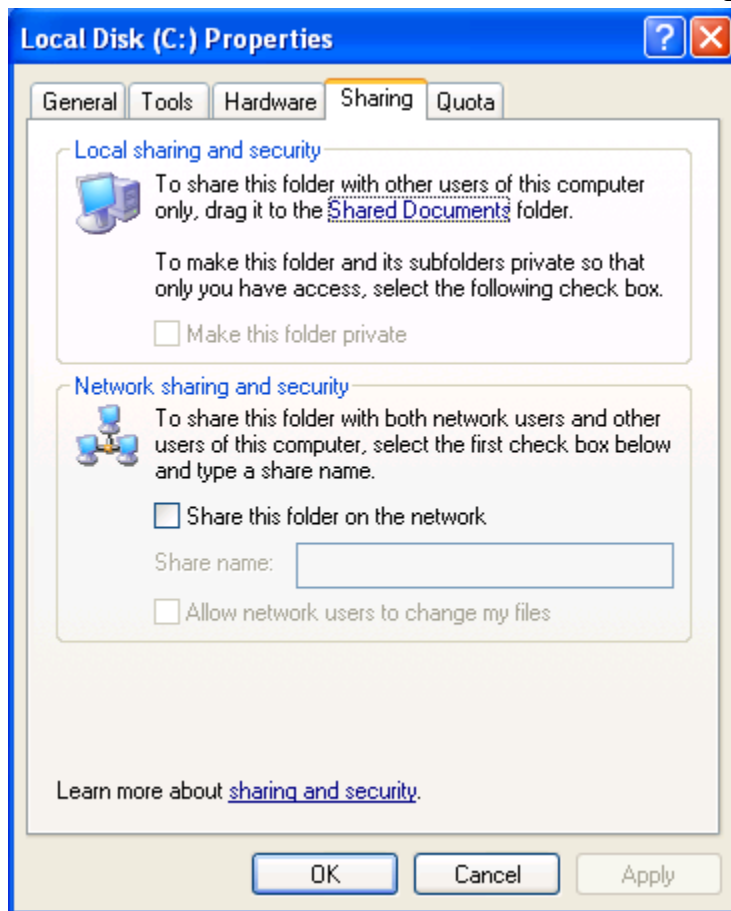
As you will see from this last dialogue, you have finished setting up the computer for access over a network, and you should select 'Finish'.

At this stage, you can removed the security so that this pc can be accessed over the network. However, you have not specified which folders may be accessed remotely. By default, the only folders that will be available will be the 'My Music', and 'My Pictures' folders. For completely generic network access, the easiest thing to do is to make the entire 'C:\' folder accessible, whilst being aware of the security implications if you do this.

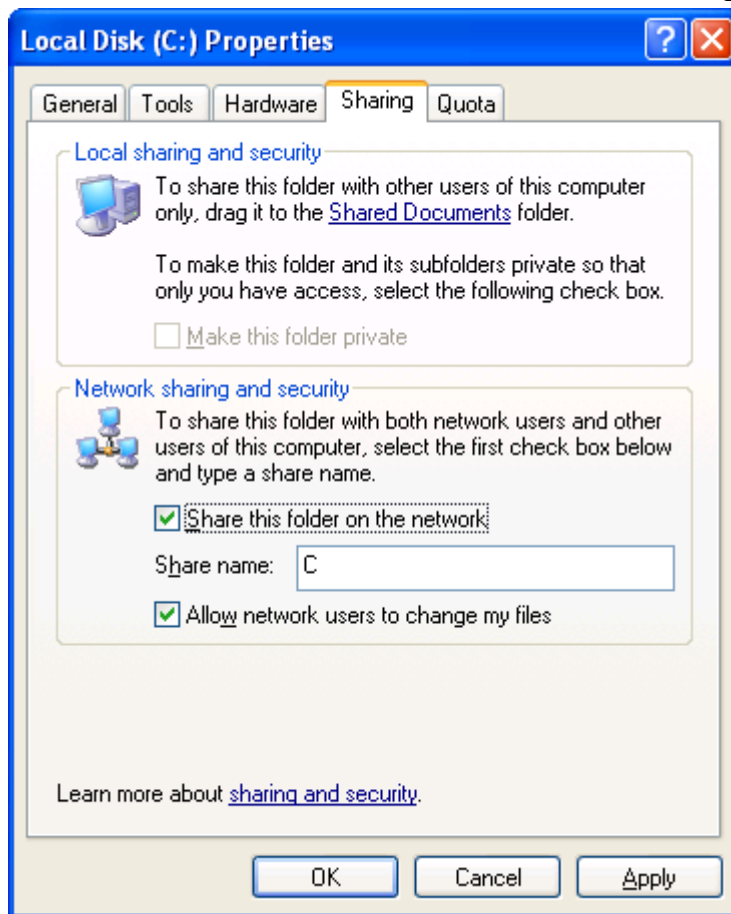
To make the 'C:\' folder available, you have to make it 'Shareable'. This is also done starting from the 'My Computer' view, and again, right click on the 'C:\' drive, and select 'Sharing and Security...' from the drop down menu.

As before, you must click on the 'I understand the risk but still...' message.

This time, you will see the following dialogue.



Select 'Share this folder on the network', and then type in a suitable name in the 'Share name:' box. If you choose the name as 'C', the dialogue will look like this.



Then select 'OK'. Windows will then update the access attributes for all the folders on the system, which could take up to a few minutes.

Once this is done, you should find that the C drive from your XP system is now completely available from anywhere on your network.